

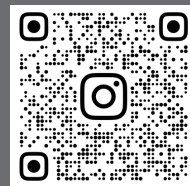
RCCT®

RCCT

RCCT

Qingdao Reliable & Trust Car Parts (RCCT)

Web: www.ritcar.com
Facebook: Qingdao RIT Car Parts
Instagram: ritcarparts
China Tel: 0086-18561377810
USA Tel: (626) 5975276
USA Warehouse Address: El Monte, Los Angeles
China Office: Chengyang District, Qingdao, China 266000
Email: ritcarparts@foxmail.com / info@ritcar.com



Please send us an email to get china port price.

CHINA QINGDAO RELIABLE & TRUST CAR PARTS

Exhaust Parts/ Racing Performance Parts
Fábrica De Silenciadores De Escape

Order Directly Through The Website



Qingdao Reliable & Trust Car Parts

Company Description

About Us:

RCCT is a renowned exhaust muffler tip factory based in Qingdao, China, specializing in manufacturing top-quality automotive components. With RCCT as your trusted partner, you gain access to a world of exceptional products and services.

Our Strengths:

Quality Excellence: RCCT is synonymous with great quality products. We take pride in delivering exhaust solutions that meet and exceed industry standards.

Innovative Design: Our development and design capabilities allow us to stay at the forefront of automotive technology, constantly innovating to meet evolving market demands.

Dedicated Team: With a team of 34 skilled workers and a dynamic sales team of 5 professionals, RCCT is committed to delivering excellence in every aspect of our business.

Global Presence:

We operate on a global scale, with a strategically located warehouse in El Monte, Los Angeles, ensuring swift and efficient deliveries to our valued North American customers. Our headquarters and office are situated in Qingdao, China, a city known for its industrial prowess.

Product Range:

RCCT offers a comprehensive range of automotive products, including:

Exhaust Mufflers/ tips: Crafted for performance and durability, esthetic and functional enhancements for exhaust systems.

Accessories: A variety of accessories to enhance exhaust functionality and appearance.

High-performance Exhaust Headers.

Expansive Facilities:

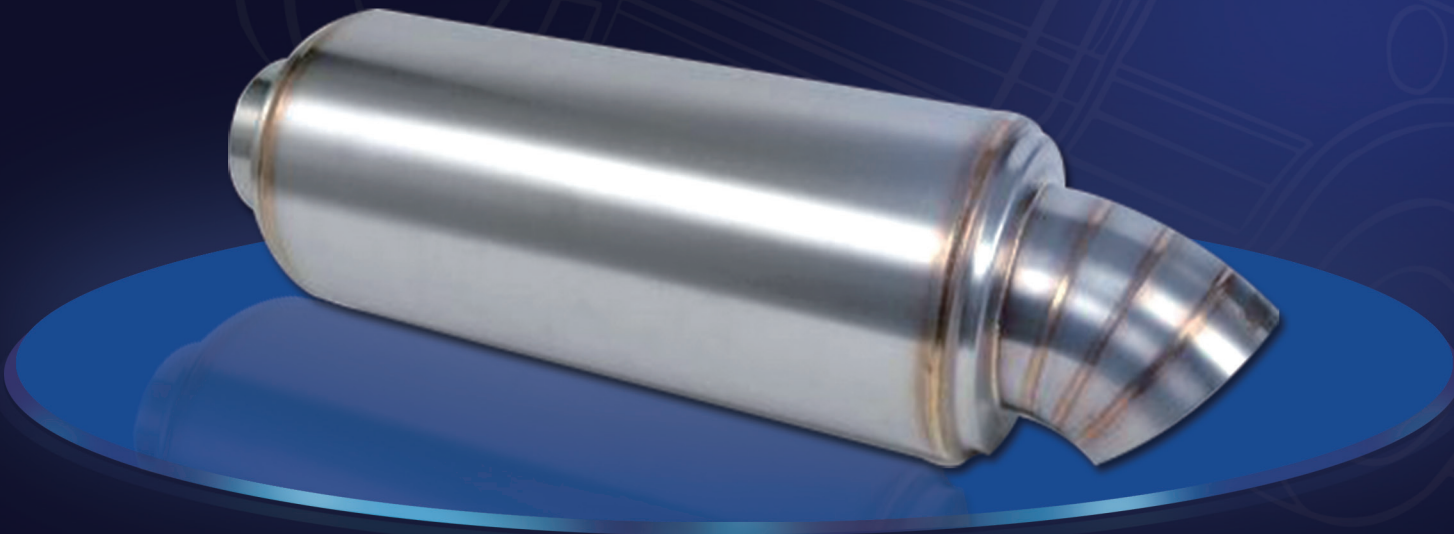
Our factory in China spans over 10,000 square feet, equipped with state-of-the-art machinery and a skilled workforce to ensure the highest standards of production.

At RCCT, we are committed to driving innovation and delivering excellence in the automotive industry. Join us in experiencing the difference in quality and performance that RCCT brings to your automotive needs.

Contact us today to explore how RCCT can elevate your automotive experience and meet your exhaust system requirements.

CONTENTS

02	•	Flex Pipe Exhaust
03	•	Clamps Including Shipping Cost
04	•	Sensor Accessories
05	•	Accessories
06	•	Gasket
07	•	Mild Steel Electroplated Flange
08	•	Exhaust X Pipe Y Pipe
08	•	Reducer Special
09	•	Elbow/ Bending Pipe
11	•	Exhaust Muffler
15	•	Exhaust Tip
18	•	Exhaust Valve
19	•	Catalytic Converter Turn Off Light
20	•	Other Performance



Flex Pipe Exhaust



Interlock

SKU	NECK	OA	QTY
AF001176L	1.75"	6"	20PCS
AF001178L	1.75"	8"	20PCS
AF001204L	2"	4"	20PCS
REC016-1	2"	6"	20PCS
AF001208L	2"	8"	20PCS
AF001224L	2.25"	4"	20PCS
REC016-2	2.25"	6"	20PCS
AF001228L	2.25"	8"	20PCS
AF001254L	2.5"	4"	20PCS
REC016-3	2.5"	6"	20PCS
AF001258L	2.5"	8"	20PCS
AF001304L	3"	4"	20PCS
REC016-4	3"	6"	20PCS
AF001308L	3"	8"	20PCS
AF001356L	3.5"	6"	20PCS
AF001358L	3.5"	8"	20PCS
REC016-6	4"	6"	20PCS
AF001408L	4"	8"	20PCS



Double Braid

SKU	NECK	OA	QTY
AF001176B	1.75"	6"	20PCS
AF001178B	1.75"	8"	20PCS
AF001204B	2"	4"	20PCS
AF001206B	2"	6"	20PCS
AF001208B	2"	8"	20PCS
AF001224B	2.25"	4"	20PCS
AF001226B	2.25"	6"	20PCS
AF001228B	2.25"	8"	20PCS
AF001254B	2.5"	4"	20PCS
AF001256B	2.5"	6"	20PCS
AF001258B	2.5"	8"	20PCS
AF001304B	3"	4"	20PCS
AF001306B	3"	6"	20PCS
AF001308B	3"	8"	20PCS
AF001356B	3.5"	6"	20PCS
AF001358B	3.5"	8"	20PCS
AF001406B	4"	6"	20PCS
AF001408B	4"	8"	20PCS

With Extention Pipe



SKU	NECK	OA	QTY
AF0021710	1.75"	10"	20PCS
AF0021712	1.75"	12"	20PCS
AF0022010	2"	10"	20PCS
AF0022012	2"	12"	20PCS
AF0022210	2.25"	10"	20PCS
AF0022212	2.25"	12"	20PCS
AF0022510	2.5"	10"	20PCS
AF0022512	2.5"	12"	20PCS
AF0023010	3"	10"	20PCS
AF0023012	3"	12"	20PCS

Outer Mesh Interlock



SKU	NECK	OA	QTY
AF003204	2"	4"	20PCS
AF003206	2"	6"	20PCS
AF003208	2"	8"	20PCS
AF003224	2.25"	4"	20PCS
AF003226	2.25"	6"	20PCS
AF003228	2.25"	8"	20PCS
AF003254	2.5"	4"	20PCS
AF003256	2.5"	6"	20PCS
AF003258	2.5"	8"	20PCS
AF003304	3"	4"	20PCS
AF003306	3"	6"	20PCS
AF003308	3"	8"	20PCS

Bellow Solid Directional Liner



SKU	NECK	OA	MATERIAL	QTY
AF00417ST	1.75"	3"	Stainless Steel	10PCS
AF00417TI	1.75"	3"	Titanium	10PCS
AF00420ST	2"	3"	Stainless Steel	10PCS
AF00420TI	2"	3"	Titanium	10PCS
AF00422ST	2.25"	3"	Stainless Steel	10PCS
AF00422TI	2.25"	3"	Titanium	10PCS
AF00425ST	2.5"	3.5"	Stainless Steel	10PCS
AF00425TI	2.5"	3.5"	Titanium	10PCS
AF00430ST	3"	3.5"	Stainless Steel	10PCS
AF00430TI	3"	3.5"	Titanium	10PCS

Clamps Including Shipping Cost

Butt Joint Clamps



SKU	SIZE	MATERIAL	QTY
AC00120	2"	Stainless Steel	20PCS
AC00122	2.25"	Stainless Steel	20PCS
AC00125	2.5"	Stainless Steel	20PCS
AC00130	3"	Stainless Steel	20PCS
AC00135	3.5"	Stainless Steel	20PCS
AC00140	4"	Stainless Steel	20PCS

Lap Joint Clamps



SKU	NECK I	NECK II	LENGTH	QTY
AC00620	2"	2.2"	75mm	10PCS
AC00622	2.25"	2.45"	75mm	10PCS
AC00625	2.5"	2.7"	75mm	10PCS
AC00630	3"	3.2"	75mm	10PCS
AC00635	3.5"	3.7"	75mm	10PCS
AC00640	4"	4.2"	75mm	10PCS

Exhaust Sleeve Clamps



SKU	SIZE	QTY
AC00220	2"	10PCS
AC00222	2.25"	10PCS
AC00225	2.5"	10PCS
AC00230	3"	10PCS

Butt Joint Band Clamp



SKU	SIZE	QTY
AC00717	1.75"	20PCS
AC00720	2"	20PCS
AC00722	2.25"	20PCS
AC00725	2.5"	20PCS
AC00730	3"	20PCS

U bolt Clamps



SKU	SIZE	QTY
AC00317	1.75"	30PCS
AC00320	2"	30PCS
AC00322	2.25"	30PCS
AC00325	2.5"	30PCS
AC00330	3"	30PCS
AC00335	3.5"	30PCS
AC00340	4"	30PCS

Exhaust Band Clamps



SKU	SIZE	QTY
AC00817	1.75"	20PCS
AC00820	2"	20PCS
AC00822	2.25"	20PCS
AC00825	2.5"	20PCS
AC00827	2.75"	20PCS
AC00830	3"	20PCS
AC00835	3.5"	20PCS
AC00840	4"	20PCS

T bolt Clamps



SKU	SIZE	MATERIAL	QTY
AC00420	2"	Stainless Steel	30PCS
AC00422	2.25"	Stainless Steel	30PCS
AC00425	2.5"	Stainless Steel	30PCS
AC00430	3"	Stainless Steel	30PCS
AC00435	3.5"	Stainless Steel	30PCS
AC00440	4"	Stainless Steel	30PCS

V-band Clamps



SKU	SIZE	FLANGE	QTY
AC00920Q	2"	Male& F Quick R	10PCS
AC00920N	2"	Male& F Normal	10PCS
AC00922Q	2.25"	Male& F Quick R	10PCS
AC00922N	2.25"	Male& F Normal	10PCS
AC00925Q	2.5"	Male& F Quick R	10PCS
AC00925N	2.5"	Male& F Normal	10PCS
AC00930Q	3"	Male& F Quick R	10PCS
AC00930N	3"	Male& F Normal	10PCS
AC00935Q	3.5"	Male& F Quick R	10PCS
AC00935N	3.5"	Male& F Normal	10PCS
AC00940Q	4"	Male& F Quick R	10PCS
AC00940N	4"	Male& F Normal	10PCS

Aluminum Clamps



SKU	SIZE	FLANGE	QTY
AC00520	2"	Male& F	10PCS
AC00525	2.5"	Male& F	10PCS
AC00530	3"	Male& F	10PCS
AC00535	3.5"	Male& F	10PCS



Sensor Accessories

Bungs



SKU	STRUCTURE	PRICE
AS001A	Curved Surface	25PCS \$35.0USD
AS001B	Flat Surface	25PCS \$30.0USD

Sensor Bung Plugs



SKU	STRUCTURE	PRICE
AS005A	Hexagon	50PCS \$35.0USD
AS005B	Sensor Hex	50PCS \$35.0USD

O₂ Sensor Spacers



SKU	SIZE	PRICE
AS002	M18×1.5	5PCS \$20.0USD

O₂ Sensor Adapter



SKU	SIZE	PRICE
AS006	M18×1.5	5PCS \$50.0USD

Oxygen Sensor Extension Spacers



SKU	SIZE	PRICE
AS003	M18×1.5	5PCS \$20.0USD

Extender Spacers 90 Degree



SKU	SIZE	PRICE
AS007	M18×1.5	5PCS \$20.0USD

Sensor Extender Spacers



SKU	SIZE	PRICE
AS004	M18×1.5	10PCS \$50.0USD

Sensor Spacer With Cat



SKU	SIZE	PRICE
AS008	M18×1.5	10PCS \$100.0USD

Accessories

Saber Saw Blade



SKU	LENGTH	PRICE
EA0016	6"	100PCS \$87.0
EA0018	8"	100PCS \$93.0

Nut Washer Kit



SKU	NUT	PRICE
EA0025	5/16"	200PCS \$46.0
EA0023	3/8"	200PCS \$46.0

Titanium Heat Wrap



SKU	LENGTH	PRICE
EA00310	10m	20PCS \$162.0
EA00315	15m(50 FT)	20PCS \$234.0

Exhaust Hanger Rod



SKU	DEGREE	DIA	LENGH	PRICE
EA004938	90Degree	3/8 "	8.0"	20PCS \$28.0
EA0049310	90Degree	3/8 "	10.0"	20PCS \$35.0
EA004918	90Degree	1/2"	8.0"	20PCS \$28.0
EA0049110	90Degree	1/2"	10.0"	20PCS \$35.0
EA0044510	45Degree	5/16"	10.0"	20PCS \$36.0
EA004438	45Degree	3/8 "	8.0"	20PCS \$28.0
EA0044310	45Degree	3/8 "	10.0"	20PCS \$35.0
EA004418	45Degree	1/2"	8.0"	20PCS \$28.0
EA0044110	45Degree	1/2"	10.0"	20PCS \$35.0
EA004538	Straight	3/8 "	8.0"	20PCS \$32.0
EA004518	Straight	1/2"	8.0"	20PCS \$26.0

Exhaust Studs



SKU	SIZE	LENGH	PRICE
EA00552	5/16" UNC	2.0"	20PCS \$26.0
EA00532	3/8" UNC	2.0"	20PCS \$26.0
EA00551	5/16" UNF	1 3/4"	20PCS \$26.0
EA00531	3/8" UNF	1 3/4"	20PCS \$26.0

Bolt Spring Kit



SKU	PRICE
EA006	20SETS \$76.0

Bolt Nut SET



SKU	NUT	PRICE
EA0075	5/16"	50PCS \$32.0
EA0073	3/8"	50PCS \$32.0

Exhaust Rubber Hanger



SKU	HOLE DIST	HOLE DIA	PRICE
EA0083	3"	0.43"	50PCS \$63.0
EA0081	1.54"	0.43"	50PCS \$53.0

Rubber Hanger O Ring



SKU	OD	ID	PRICE
EA009	60mm	35mm	50PCS \$40.0

Exhaust Hanger



SKU	DIA	LENGH	PRICE
EA0103	3/8"	10"	20PCS \$46.0
EA0101	1/2"	10"	20PCS \$46.0

Prius Bolt& Gasket



SKU	PRICE
EA011	10SETS \$120.0

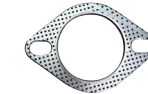
Gasket

Asbestos Free Gasket



SKU	SIZE	SHAPE	PRICE
EG00120	2"	2 Bolt	50PCS \$34.0
EG00122	2.25"	2 Bolt	50PCS \$34.0
REC011-1	2.5"	2 Bolt	50PCS \$34.0
REC011-2	3"	2 Bolt	50PCS \$40.0
EG00135	3.5"	2 Bolt	50PCS \$45.0

Asbestos Gasket



SKU	SIZE	SHAPE	PRICE
EG00220	2"	2 Bolt	10PCS \$10.0
EG00222	2.25"	2 Bolt	10PCS \$10.0
REC011-63	2.5"	2 Bolt	10PCS \$10.0
EG00230	3"	2 Bolt	10PCS \$10.0
EG00235	3.5"	2 Bolt	10PCS \$10.0

Copper Gasket



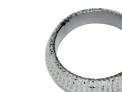
SKU	SIZE	SHAPE	PRICE
EG00325	2.5"	3 Bolt	50PCS \$72.0
EG00330	3"	3 Bolt	50PCS \$72.0
EG00335	3.5"	3 Bolt	50PCS \$75.0

Full Steel Gasket



SKU	SIZE	SHAPE	PRICE
EG004252	2.5"	2 Bolt	50PCS \$50.0
EG004253	2.5"	3 Bolt	50PCS \$50.0
EG004302	3"	2 Bolt	50PCS \$50.0
EG004303	3"	3 Bolt	50PCS \$50.0

Honda Civic Header Donut



SKU	FIT	PRICE
EG005	2.5" Fit Acura Integra Honda Civic	20PCS \$55.0

Asbestos Free Gasket



SKU	SIZE	SHAPE	PRICE
EG00620	2"	3 Bolt	50PCS \$34.0
EG00622	2.25"	3 Bolt	50PCS \$34.0
REC011-3	2.5"	3 Bolt	50PCS \$34.0
REC011-4	3"	3 Bolt	50PCS \$40.0
REC011-5	3.5"	3 Bolt	50PCS \$45.0

Asbestos Gasket



SKU	SIZE	SHAPE	PRICE
EG00720	2"	3 Bolt	10PCS \$10.0
EG00722	2.25"	3 Bolt	10PCS \$10.0
EG00725	2.5"	3 Bolt	10PCS \$10.0
EG00730	3"	3 Bolt	10PCS \$10.0
EG00735	3.5"	3 Bolt	10PCS \$10.0

Honda Header Gasket



SKU	FIT	PRICE
EG008	Integra/Acura D15 D16 B17 B18 B20	20PCS \$50.0



T3 T4 Turbo Gasket

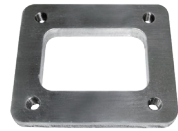
SKU	FIT	PRICE
EG009A	T4 Bolt Turbo Gasket	20PCS \$50.0
EG009B	T4 Divided Turbo Gasket	20PCS \$50.0
EG009C	T3 T4 T5 Bolt Flange Gasket	20PCS \$50.0

Mild Steel Electroplated Flange



2 Bolt Flange

SKU	SIZE	PRICE
EF00120	2"	20PCS \$115.0
EF00122	2.25"	20PCS \$118.0
EF00125	2.5"	20PCS \$122.0
EF00130	3"	20PCS \$126.0



T4 Turbo Flange

SKU	SIZE	PRICE
EF002	m10×1.5	20PCS \$130.0



Exhaust Collector Flange

SKU	SIZE	PRICE
EF00320	2"	20PCS \$80.0
EF00322	2.25"	20PCS \$80.0
EF00325	2.5"	20PCS \$80.0



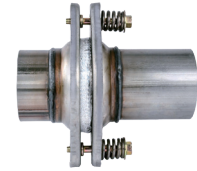
3 Bolt Flange

SKU	SIZE	PRICE
EF00420	2"	20PCS \$120.0
EF00422	2.25"	20PCS \$125.0
EF00425	2.5"	20PCS \$130.0
EF00430	3"	20PCS \$135.0



T4 Turbo Divided Flange

SKU	SIZE	PRICE
EF005	m10×1.5	20PCS \$135.0



Exhaust Flex Spring Joint

SKU	DIA	LENGTH	PRICE
EF00620	2"	6"	10PCS \$130.0
EF00622	2.25"	6"	10PCS \$130.0
EF00625	2.5"	6"	10PCS \$135.0



Prius Corolla Flange

SKU	PRICE
EF007	10PCS \$140.0



Prius Corolla Kit

SKU	PRICE
EF008	10SETS \$210.0

Exhaust X Pipe Y Pipe



409 Y Pipe

SKU	SINGLE	DUAL OUTLET	QTY
EA0012020	2"	2"	20PCS
EA0012222	2.25"	2.25"	20PCS
EA0012522	2.5"	2.25"	20PCS
EA0012525	2.5"	2.5"	20PCS
EA0013022	3"	2.25"	20PCS
EA0013025	3"	2.5"	20PCS
EA0013030	3"	3"	20PCS



409 X Pipe

SKU	INLET	OUTLET	QTY
EA00220	2"	2"	10PCS
EA00222	2.25"	2.25"	10PCS
EA00225	2.5"	2.5"	10PCS
EA00230	3"	3"	10PCS



2 In 1 Exhaust Y pipe

SKU	SINGLE	DUAL OUTLET	QTY
EA003202	2"	2"	10PCS
EA003222	2.25"	2.25"	10PCS
EA003252	2.5"	2.25"	10PCS
EA0032525	2.5"	2.5"	10PCS
EA003302	3"	2.5"	10PCS
EA003303	3"	3"	10PCS
EA003404	4"	4"	10PCS



Reducer Pipe

SKU	DIA I	DIA II	QTY
EA0042025	2"	2.5"	20PCS
EA0042030	2"	3"	20PCS
EA0042225	2.25"	2.5"	20PCS
EA0042230	2.25"	3"	20PCS
EA0042530	2.5"	3"	20PCS
EA0042535	2.5"	3.5"	20PCS
EA0043035	3"	3.5"	20PCS

Reducer Special



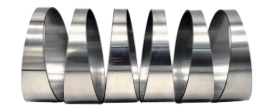
Donut Mandrel

SKU	DIA	SHAPE	QTY
EA00520A	2"	Aluminum Full Round	10PCS
EA00520S	2"	Stainless Full Round	10PCS
EA00525A	2.5"	Aluminum Full Round	10PCS
EA00525S	2.5"	Stainless Full Round	10PCS
EA00530A	3"	Aluminum Full Round	10PCS
EA00530S	3"	Stainless Full Round	10PCS



Quick Release Aluminum

SKU	SIZE	FLANGE	QTY
EA00625	2.5"	Male& F	10PCS
EA00630	3"	Male& F	10PCS
EA00635	3.5"	Male& F	10PCS
EA00640	4"	Male& F	10PCS



90 Degree Pie Cut

SKU	DIA	MATERIAL	QTY
EA00720S	2"	15 Degree Stainless	10PCS
EA00720T	2"	15 Degree Titanium	10PCS
EA00725S	2.5"	15 Degree Stainless	10PCS
EA00725T	2.5"	15 Degree Titanium	10PCS
EA00730S	3"	15 Degree Stainless	10PCS
EA00730T	3"	15 Degree Titanium	10PCS



Exhaust Rain Cap

SKU	DIA	FIT	QTY
EA00820	2"	2" to 2-3/16"	20PCS
EA00825	2.5"	2-1/2" to 2-11/16"	20PCS
EA00830	3"	3" to 3-3/16"	20PCS
EA00835	3.5"	3-1/2" to 3-11/16"	20PCS
EA00840	4"	4" to 4-3/16"	20PCS
EA00845	4.5"	4-1/2" to 4-11/16"	20PCS
EA00850	5"	5" to 5-3/16"	20PCS

Elbow/ Bending Pipe

Mandrel Bend Elbow SUS304 Polishing 1.5mm Thickness

SKU	RADIUS	DIA	ANGLE	SKU	RADIUS	DIA	ANGLE
REC005-1-1	1.5D	1.5"	45Degree	REC005-17	1.5D	2.25"	60Degree
REC005-2	1.5D	1.5"	60Degree	REC005-1-10	1.3D	2.25"	90Degree
REC005-1-2	1.5D	1.5"	90Degree	REC005-19	1.5D	2.25"	180Degree
REC005-4	1.5D	1.5"	180Degree	REC005-1-11	1.5D	2.25"	360Degree
REC005-1-3	1.5D	1.5"	360Degree	REC005-1-12	1.8m	2.25"	Straight
REC005-1-4	1.8m	1.5"	Straight	REC005-1-13	1.0D	2.5"	45Degree
REC005-6	1.5D	1.75"	45Degree	REC005-2560	1.5D	2.5"	60Degree
REC005-7	1.5D	1.75"	60Degree	REC005-1-14	1.0D	2.5"	90Degree
REC005-8	1.5D	1.75"	90Degree	REC005-2518	1.5D	2.5"	180Degree
REC005-9	1.5D	1.75"	180Degree	REC005-1-15	1.5D	2.5"	360Degree
REC005-10	1.5D	1.75"	360Degree	REC005-1-16	1.8m	2.5"	Straight
REC005-1-5	1.0D	2"	45Degree	REC005-1-17	1.0D	3"	45Degree
REC005-12	1.5D	2"	60Degree	REC005-22	1.5D	3"	60Degree
REC005-1-6	1.0D	2"	90Degree	REC005-1-18	1.0D	3"	90Degree
REC005-14	1.5D	2"	180Degree	REC005-24	1.5D	3"	180Degree
REC005-1-7	1.5D	2"	360Degree	REC005-1-19	1.5D	3"	360Degree
REC005-1-8	1.8m	2"	Straight	REC005-1-20	1.8m	3"	Straight
REC005-1245	1.5D	2.125"	45Degree	REC005-1-21	1.5D	3.5"	45Degree
REC005-1260	1.5D	2.125"	60Degree	REC005-1-22	1.5D	3.5"	90Degree
REC005-1290	1.5D	2.125"	90Degree	REC005-1-23	1.5D	3.5"	360Degree
REC005-1218	1.5D	2.125"	180Degree	REC005-1-24	1.8m	3.5"	Straight
REC005-1236	1.5D	2.125"	360Degree	REC005-1-25	1.5D	4"	45Degree
REC005-1-9	1.3D	2.25"	45Degree	REC005-1-26	1.5D	4"	90Degree



Tubing Mandrel Bends Aluminized Multi-bend Mandrel Bends

SKU	DESCRIPTION	SIZE	MATERIAL
EP00117	U Shape Pipe 6Inch+7Inch 45Degree Leg 10Inch	1.75"	16 Gauge Aluminized
EP00120	U Shape Pipe 6Inch+7Inch 45Degree Leg 10Inch	2.0"	16 Gauge Aluminized
EP00122	U Shape Pipe 6Inch+7Inch 45Degree Leg 10Inch	2.25"	16 Gauge Aluminized
EP00125	U Shape Pipe 6Inch+7Inch 45Degree Leg 10Inch	2.5"	16 Gauge Aluminized
EP00130	U Shape Pipe 6Inch+7Inch 45Degree Leg 10Inch	3.0"	16 Gauge Aluminized

Elbow/ Bending Pipe

Mandrel Bend With Leg

SKU	DESCRIPTION	SIZE	LEG
EP002417	45Degree 1.5mm Thick	1.75"	6"
EP002420	45Degree 1.5mm Thick	2"	6"
EP002422	45Degree 1.5mm Thick	2.25"	6"
EP002425	45Degree 1.5mm Thick	2.5"	6"
EP002430	45Degree 2.0mm Thick	3"	6"
EP002435	45Degree 2.0mm Thick	3.5"	6"
EP002440	45Degree 2.0mm Thick	4"	6"
EP002917	90Degree 1.5mm Thick	1.75"	6"
EP002920	90Degree 1.5mm Thick	2"	6"
EP002922	90Degree 1.5mm Thick	2.25"	6"
EP002925	90Degree 1.5mm Thick	2.5"	6"
EP002930	90Degree 1.5mm Thick	3"	6"
EP002935	90Degree 2.0mm Thick	3.5"	6"
EP002940	90Degree 2.0mm Thick	4"	6"
EP002117	180Degree 1.8mm Thick	1.75"	8"
EP002120	180Degree 1.8mm Thick	2"	8"
EP002122	180Degree 1.8mm Thick	2.25"	8"
EP002125	180Degree 1.8mm Thick	2.5"	8"
EP002130	180Degree 1.8mm Thick	3"	8"
EP002135	180Degree 1.8mm Thick	3.5"	8"
EP002140	180Degree 1.8mm Thick	4"	8"



10 Feet Straight Steel Tube

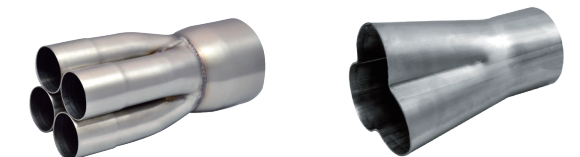
SKU	THICKNESS	SIZE	MATERIAL
EP00317A	15 Gauge	1.75"	Aluminized
EP00320A	18 Gauge	2"	Aluminized
EP00322A	18 Gauge	2.25"	Aluminized
EP00325A	20 Gauge	2.5"	Aluminized
EP00330A	20 Gauge	3"	Aluminized
EP00317G	15 Gauge	1.75"	Galvanized
EP00320G	18 Gauge	2"	Galvanized
EP00322G	18 Gauge	2.25"	Galvanized
EP00325G	20 Gauge	2.5"	Galvanized
EP00330G	20 Gauge	3"	Galvanized

Bent Oval Tubing

SKU	THICKNESS	SIZE	MATERIAL
EP004	5Feet 16Gauge	3"	SS304

4 In 1 Merge Collector

SKU	LENGTH	COLLECT	INLET SLIPOVER
EP005251	8"	2.5"	1.5"
EP005302	8"	3"	2"
EP005301	8"	3"	1.75"
EP0053017	8"	3"	1 7/8"



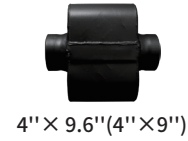
Merge Collerotor 3In 1

SKU	LENGTH	COLLECT	INLET SLIPOVER
EP006	6"	2.5"	1.5"

Exhaust Muffler

Aluminized Exhaust Muffler

SKU	IN& OUTLET	BODY LENGTH	BODY SHAPE
EM0282265CC	2.25"	6.5"	Center Inlet& Center Outlet
EM0282565CC	2.5"	6.5"	Center Inlet& Center Outlet
EM0283065CC	3"	6.5"	Center Inlet& Center Outlet
EM0282265OC	2.25"	6.5"	Offset Inlet& Center Outlet
EM0282565OC	2.5"	6.5"	Offset Inlet& Center Outlet
EM0282265OO	2.25"	6.5"	Offset Inlet & Offset Outlet
EM0282565OO	2.5"	6.5"	Offset Inlet& Offset Outlet
EM0283065CD	3" / 2.5"	6.5"	Center Inlet& Dual Outlet
EM0282565CD	2.5" / 2.25"	6.5"	Center Inlet& Dual Outlet
EM0282265DD	2.25"	6.5"	Dual Inlet& Dual Outlet
EM0282565DD	2.5"	6.5"	Dual Inlet& Dual Outlet
EM0282213OC	2.25"	13"	Offset Inlet& Center Outlet
EM0282513OC	2.5"	13"	Offset Inlet& Center Outlet
EM0283013OC	3"	13"	Offset Inlet& Center Outlet
EM0282213OO	2.25"	13"	Offset Inlet& Offset Outlet
EM0282513OO	2.5"	13"	Offset Inlet& Offset Outlet
EM0283013OO	3"	13"	Offset Inlet& Offset Outlet
EM0282213CO	2.25"	13"	Center Inlet& Offset Outlet
EM0282513CO	2.5"	13"	Center Inlet& Offset Outlet
EM0283013CD	3" / 2.5"	13"	Center Inlet& Dual Outlet
EM0282513CD	2.5" / 2.25"	13"	Center Inlet& Dual Outlet
EM0282513DD	2.5"	13"	Dual Inlet& Dual Outlet
EM0282213DD	2.25"	13"	Dual Inlet& Dual Outlet



Exhaust Muffler

K Turned Muffler

SKU	IN& OUTLET	BODY DIA	BODY L
EM02120	2" / 4"	5"	12"
EM02122	2.25" / 4"	5"	12"
EM02125	2.5" / 4"	5"	12"
EM02130	3" / 4"	5"	12"



N1 Muffler

SKU	IN& OUTLET	BODY DIA	BODY L
EM022204	2" / 3.5"	4"	10"
EM022224	2.25" / 3.5"	4"	10"
EM022254	2.5" / 3.5"	4.5"	10"
EM02230510	3" / 4"	5"	10"
EM022225	2.25" / 4"	5"	12"
EM022255	2.5" / 4"	5"	12"
EM02230512	3" / 4"	5"	12"



SS201 Polishing Resonator

SKU	IN& OUTLET	BODY DIA	BODY L
EM02320	2"	4"	10"
EM02322	2.25"	4"	10"
EM02325	2.5"	4"	10"
EM02330	3"	4"	10"



SS409 Resonator

SKU	IN& OUTLET	BODY DIA	BODY L
EM02422	2.25"	4"	14"
EM02425	2.5"	4"	14"
EM02430	3"	4"	14"



Aluminized Welded Resonators

SKU	IN& OUTLET	BODY DIA	BODY L
EM02517	1.75"	3.5"	12"
EM02520	2"	3.5"	12"
EM02522	2.25"	3.5"	12"



Aluminized Welded Resonators

SKU	IN& OUTLET	BODY DIA	BODY L
EM02620	2"	3.5"	16"
EM02622	2.25"	3.5"	16"



L Performance Muffler

SKU	IN& OUTLET	BODY DIA	BODY L
EM02725	2.5"	5"	6.5"
EM02730	3"	5"	6.5"



Exhaust Muffler

Dual Racing Power Muffler



SKU	IN&OUTLET	BODY SIZE	BODY L
EM00122	2.25" / 3"	5"×9"	15"
EM00125	2.5" / 3"	5"×9"	15"
EM00130	3" / 3.5"	5"×9"	15"

Dual Racing Power Muffler



SKU	IN&OUTLET	BODY SIZE	BODY L
EM0022214	2.25"	4"×9"	14"
EM0022514	2.5"	4"×9"	14"
EM0022518	2.5"	4"×9"	18"

409 Racing Power Muffler



SKU	IN&OUTLET	BODY SIZE	BODY L
EM0033025	3" Dual 2.5"	4"×9"	14"
EM0032525	2.5" Dual 2.5"	4"×9"	14"
EM0033030	3" Dual 3"	4"×9"	14"

Offset & Offset



SKU	IN&OUTLET	BODY SIZE	BODY L
EM00420	2"	4"×9"	14"
EM00422	2.25"	4"×9"	14"
EM00425	2.5"	4"×9"	14"
EM00430	3"	4"×9"	14"

Offset & Center Outlet



SKU	IN&OUTLET	BODY SIZE	BODY L
EM00520	2"	4"×9"	14"
EM00522	2.25"	4"×9"	14"
EM00525	2.5"	4"×9"	14"
EM00530	3"	4"×9"	14"

Single Racing Power Muffler



SKU	IN&OUTLET	BODY SIZE	BODY L
EM00622	2.25" / 3"	5"×9"	15"
EM00625	2.5" / 3"	5"×9"	15"
EM00630	3" / 3.5"	5"×9"	15"

MUGEN Loop S-Flow Muffler



SKU	IN&OUTLET	BODY DIA	BODY L
EM00720	2" / 3.5"	8"	10"
EM00722	2.25" / 3.5"	8"	10"
EM00725	2.5" / 3.5"	8"	10"

Oval 201 Resonator



SKU	IN&OUTLET	BODY SIZE	BODY L
EM00822	2.25"	4"×9"	10"
EM00825	2.5"	4"×9"	10"
EM00830	3"	4"×9"	10"

Dual Racing Sport



SKU	IN&OUTLET	BODY SIZE	BODY L
EM00922	2.25" / 3"	5"×10"	14"
EM00925	2.5" / 3"	5"×10"	14"
EM00930	3" / 3"	5"×10"	14"

Wide Euro Oval Muffler



SKU	IN&OUTLET (70mm×140mm)	BODY SIZE	BODY L
RMT010-2.25	2.25"	5"×8"	12"
RMT010-2.5	2.5"	5"×8"	12"
RMT010-3.0	3"	5"×8"	12"

Exhaust Muffler

Aluminized Glass Pack Offset & Offset



SKU	IN&OUTLET	BODY DIA	BODY L
EM0111716	1.75"	6"	16"
EM0112018	2"	6"	18"
EM0112024	2"	6"	24"
EM0112218	2.25"	6"	18"
EM0112224	2.25"	6"	24"
EM0112524	2.5"	6"	24"
EM0113024	3"	7"	24"

Center & Offset



SKU	IN&OUTLET	BODY SIZE	BODY L
EM01222	2.25"	4"×9"	14"
EM01225	2.5"	4"×9"	14"
EM01230	3"	4"×9"	14"

Center & Offset



SKU	IN&OUTLET	BODY SIZE	BODY L
EM01322	2.25"	4"×9"	9"
EM01325	2.5"	4"×9"	9"
EM01330	3"	4"×9"	9"

Offset & Center



SKU	IN&OUTLET	BODY SIZE	BODY L
EM01422	2.25"	4"×9"	14"
EM01425	2.5"	4"×9"	14"
EM01430	3"	4"×9"	14"

Center & Center



SKU	IN&OUTLET	BODY SIZE	BODY L
EM01522	2.25"	4"×9"	9"
EM01525	2.5"	4"×9"	9"
EM01530	3"	4"×9"	9"

One Inlet & Dual Outlet



SKU	IN&OUTLET	BODY SIZE	BODY L
EM0162520	2.5" / 2"	4"×9"	18"
EM0162525	2.5" / 2.5"	4"×9"	18"
EM0163025	3" / 2.5"	4"×9"	18"
EM0163022	3" / 2.25"	4"×9"	18"

Center & Center Oval Muffler



SKU	IN&OUTLET	BODY SIZE	BODY L
EM01722	2.25"	4"×9"	12"
EM01725	2.5"	4"×9"	12"
EM01730	3"	4"×9"	14"

Dual Aluminized Quiet



SKU	IN&OUTLET	BODY SIZE	BODY L
EM0182520	2.5" / 2"	4.5"×8.5"	14"
EM0182522	2.5" / 2.25"	4.5"×8.5"	14"
EM0182525	2.5" / 2.5"	4.5"×8.5"	14"
EM0183022	3" / 2.25"	4.5"×8.5"	14"
EM0183025	3" / 2.5"	4.5"×8.5"	14"

Aluminized Quiet Oval Offset & Center Outlet



SKU	IN&OUTLET	BODY SIZE	BODY L
EM01920	2"	4"×9"	14"
EM01922	2.25"	4"×9"	14"
EM01925	2.5"	4"×9"	14"
EM01930	3"	4"×9"	14"

Aluminized Quiet Oval Offset & Offset



SKU	IN&OUTLET	BODY SIZE	BODY L
EM02025	2.5"	4"×9"	18"
EM02030	3"	4"×9"	18"

Exhaust Tip



Black Paint Tip Cut Angle Rolled Edge

SKU	IN&OUTLET	OVERALL
ET001203	2"/3.5"	200mm
ET001223	2.25"/3.5"	300mm
ET001253	2.5"/3.5"	300mm
ET001254	2.5"/4"	200mm
ET001304	3"/4"	300mm



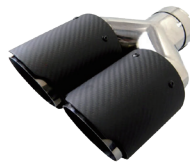
Black Paint Tip Cut Angle Double Wall

SKU	IN&OUTLET	OVERALL
ET002223	2.25"/3.5"	200mm
ET002254	2.5"/4"	150mm
ET002255	2.5"/5"	225mm
ET002304	3"/4"	127mm



Double Wall Cut Angle

SKU	IN&OUTLET	OVERALL
ET00320	2"/3.5"	250mm
ET00322	2.25"/3.5"	250mm
ET00325	2.5"/4"	250mm
ET00330	3"/4"	250mm



Dual Carbon Fiber

SKU	IN&OUTLET	OVERALL
ET00420	2"/3.5"	240mm
ET00422	2.25"/3.5"	240mm
ET00425	2.5"/4"	240mm
ET00430	3"/4"	240mm

Rolled Angle Tip



SKU	IN&OUTLET	OVERALL
ET00520	2"/3"	10"
ET00522	2.25"/3"	12"
ET00525	2.5"/3"	12"
ET00530	3"/4"	12"
ET005304	3"/4"	18"



Carbon Fiber Tip

SKU	IN&OUTLET	OVERALL
ET00620	2"/3.5"	160mm
ET00622	2.25"/3.5"	160mm
ET00625	2.5"/4"	160mm
ET00630	3"/4"	160mm



Perforations Exhaust Tip

SKU	IN&OUTLET	OVERALL
ET00720	2"/3.5"	160mm
ET00722	2.25"/3.5"	160mm
ET00725	2.5"/4"	160mm
ET00730	3"/4"	160mm



Round Edge Carbon Fiber

SKU	IN&OUTLET	OVERALL
ET00820	2"/3.5"	160mm
ET00822	2.25"/3.5"	160mm
ET00825	2.5"/4"	160mm
ET00830	3"/4"	160mm

Exhaust Tip

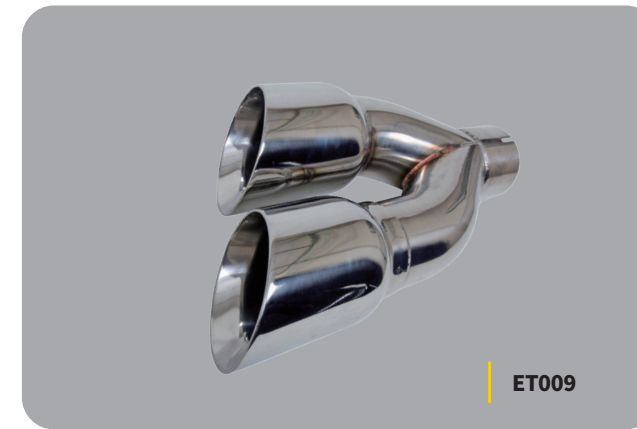


Dual Blue Chrome Tip

SKU	IN&OUTLET	OVERALL
ET01220	2"/3.5"	10"
ET01222	2.25"/3.5"	10"
ET01225	2.5"/4"	12"
ET01230	3"/4"	12"

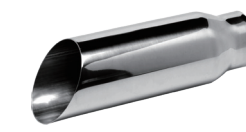
Dual Cut Angle

SKU	IN&OUTLET	SURFACE	OVERALL
ET00920P	2"/3.5"	Polishing	10"
ET00920BL	2"/3.5"	Black Chrome	10"
ET00922P	2.25"/3.5"	Polishing	10"
ET00922BL	2.25"/3.5"	Black Chrome	10"
ET00925P	2.5"/4"	Polishing	12"
ET00925BL	2.5"/4"	Black Chrome	12"
ET00930P	3"/4"	Polishing	12"
ET00930BL	3"/4"	Black Chrome	12"



Dual Polishing Chrome Tip

SKU	IN&OUTLET	OVERALL
ET01025	2.5"/4"	12"
ET01030	3"/4"	12"

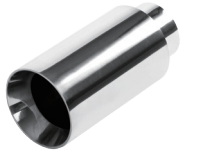


Angle Cut 45° Tip

SKU	IN&OUTLET	OVERALL
ET0112216	2.25"/3.5"	16"
ET0112218	2.25"/3.5"	18"
ET0112512	2.5"/3.5"	12"
ET0112518	2.5"/3.5"	18"

Double Wall Polishing

SKU	IN&OUTLET	OVERALL
ET01322	2.25"/3"	12"
ET01325	2.5"/3"	12"
ET01330	3"/4"	12"



Forged Carbon Fiber Exhaust Tip

SKU	IN&OUTLET	OVERALL
ET01420	2"/4"	160mm
ET01425	2.5"/4"	160mm



Double Wall Blue Tip

SKU	IN&OUTLET	OVERALL
ET015207	2"/3.5"	7"
ET015227	2.25"/3.5"	7"
ET0152510	2.5"/4"	10"
ET0152512	2.5"/5"	12"
ET0153010	3"/4"	10"
ET0153012	3"/5"	12"



Exhaust Tip



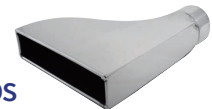
Turn Down Exhaust Tip

SKU	IN&OUTLET	OVERALL	QTY
ET01620	2"/2.25"	9"	10PCS
ET01622	2.25"/2.5"	9"	10PCS
ET01625	2.5"/3"	9"	10PCS
ET01630	3"/3"	12"	10PCS
ET01635	3.5"/3.5"	15"	10PCS



Square Slant Cut Exhaust Tips

SKU	IN	OUTLET	OVERALL
ET01722	2.25"	2"×6"	10"
ET01725	2.5"	2"×6"	10"



Square Slant Cut Exhaust Tips

SKU	IN	OUTLET	OVERALL
ET01822	2.25"	2"×6"	10"
ET01825	2.5"	2"×6"	10"



Rear Exhaust Pipe Tip

SKU	IN	OUTLET	OVERALL
ET019	62~64mm	60mm×80mm	148mm



Quad Exhaust Tip

SKU	IN&OUTLET	OVERALL	QTY
ET02025	2.5"/3.5"	12"	10PCS
ET02030	3"/3.5"	12"	10PCS



Different Length Blue Tip

SKU	IN&OUTLET	OVERALL	QTY
ET02125	2.5"/4"	12"	10PCS
ET02130	3"/4"	12"	10PCS



Dual Turn Up Tip

SKU	IN&OUTLET	OVERALL	QTY
ET02222	2.25"/3"	12"	10PCS
ET02225	2.5"/3"	12"	10PCS



Triple Exhaust Tip

SKU	IN&OUTLET	OVERALL	QTY
ET02325	2.5"/3.5"	12"	10PCS
ET02330	3"/3.5"	12"	10PCS



BMW M Serious Tip

SKU	IN&OUTLET	OVERALL	QTY
ET02425	2.5"/3.5"	120mm	10PCS
ET02427	2.75"/3.5"	120mm	10PCS



3In Round Inlet Tip

SKU	IN	OUTLET	OVERALL
ET02530	3"	5"	7"

Exhaust Valve



20In Vacuum Muffler Valve

SKU	IN&OUTLET	BODY LENGTH	BODY SIZE
EV00130	3"	190mm×280mm	20"
EV00135	3.5"	190mm×280mm	20"
EV00140	4"	190mm×280mm	20"

Vacuum Pump Controller Box

SKU
EV003



Electric Exhaust Cutout

SKU	SIZE
EV00425	2.5"
EV00430	3"

Electric Exhaust Control Valve

SKU	SIZE
EV00520	2"
EV00522	2.25"
EV00525	2.5"
EV00530	3"



Vacuum Pump Exhaust Valve KIT

SKU	SIZE
EV00620	2"
EV00622	2.25"
EV00625	2.5"
EV00630	3"

Normally Vacuum Pressure Exhaust Cutout Valve

SKU	SIZE
EV00720	2"
EV00722	2.25"
EV00725	2.5"
REV010-1	3"
REV010-2	3.5"
REV010-3	4"



Electric Exhaust Valve KIT

SKU	SIZE
EV00822	2.25"
EV00825	2.5"
EV00830	3"

Dual Outlet Muffler Valve

SKU	SIZE
EV00925	2.5"
EV00930	3"
EV00935	3.5"



Muffler Valve

SKU	IN&OUTLET	BODY LENGTH	BODY SIZE
EV00220	2"	140mm×220mm	260mm
EV00225	2.5"	140mm×220mm	260mm
EV00230	3"	140mm×220mm	260mm



Electronic Exhaust Remote Control Switch

SKU
EV010



Exhaust Downpipe E-Cutout

SKU	SIZE
EV01120	2"
EV01122	2.25"
EV01125	2.5"
EV01130	3"

Electric Exhaust Control Valve

SKU	SIZE
EV01225	2.5"
EV01230	3"



Vacuum Pump Variable Valve Mufflers

SKU	SIZE
EV01330	Inlet 3" Dual 2.5"
EV01325	Inlet 2.5" Dual 2.5"

Electric Exhaust Valve Flapper

SKU	SIZE
EV01422	2.25"
EV01425	2.5"
EV01430	3"
EV01435	3.5"



Dual Electric Exhaust Valve

SKU	SIZE
EV01525	2.5"
EV01530	3"

Electronic Exhaust Valve

SKU	SIZE
EV01620	2"
EV01622	2.25"
EV01625	2.5"
EV01630	3"



Catalytic Converter Turn Off Light

Round With Shield

SKU	IN&OUTLET	CORE & OVERALL	CORE
EC00120	2" / 2"	120×80×150mm (14")	Ceramic Carrier
EC00122	2.25" / 2.25"	120×80×150mm (14")	Ceramic Carrier
EC00125	2.5" / 2.5"	120×80×150mm (14")	Ceramic Carrier



Square With Heatshield

SKU	IN&OUTLET	CORE & OVERALL	CORE
EC00220	2" / 2"	4.7"×3.1" (14")	Ceramic Carrier
EC00222	2.25" / 2.25"	4.7"×3.1" (14")	Ceramic Carrier
EC00225	2.5" / 2.5"	4.7"×3.1" (14")	Ceramic Carrier



Normal Catalytic Converter

SKU	IN&OUTLET	CORE & OVERALL	CORE
EC00320	2" / 2"	4" Dia× 4" (8")	Ceramic Carrier
RAF019-3-2	2.25" / 2.25"	4" Dia× 4" (8")	Ceramic Carrier
RAF019-3-3	2.5" / 2.5"	4.5" Dia× 4" (8")	Ceramic Carrier
RAF019-3-4	3" / 3"	4.5" Dia× 4" (8")	Ceramic Carrier



High Flow Not Turn Off Light

SKU	IN&OUTLET	CORE & OVERALL	CORE
EC00422	2.25" / 2.25"	101×101 mm (8")	Metal Carrier 200Cell
EC00425	2.5" / 2.5"	101×101 mm (8")	Metal Carrier 200Cell
EC00430	3" / 3"	101×101 mm (8")	Metal Carrier 200Cell



Aluminum Heat Shield

SKU	FITTING
OP006A	500*800*0.5mm
OP006B	500*1220*0.5mm



Oil Catch Cans

SKU	CAPACITY	DESCRIPTION	COLOR
OP0073	300ml	With Filter	Black Color
OP0076	600ml	Without Filter	Black Color



Other Performance

Air Filter Element

SKU	NECK DIA	BODY DIAMETER	COLOR
OP00125	2.5"	152mm	Red Woven Cotton
OP00130	3"	152mm	Red Woven Cotton
OP00135	3.5"	152mm	Red Woven Cotton
OP00140	4"	152mm	Red Woven Cotton
OP00145	4.5"	152mm	Red Woven Cotton
OP00150	5"	200mm	Red Woven Cotton
OP00155	5.5"	200mm	Red Woven Cotton
OP00160	6"	200mm	Red Woven Cotton



Mini High Flow Air Filter

SKU	NECK DIA	BODY DIAMETER	COLOR
OP0029	9mm	50mm	Black
OP00212	12mm	50mm	Black
OP00218	18mm	50mm	Black
OP00225	25mm	50mm	Black



Aluminum Fuel Oil Tank

SKU	SIZE	FITTING	DESCRIPTION
OP0035	5Gallon	10AN	Aluminum
OP00310	10Gallon	10AN	Aluminum
OP00315	15Gallon	10AN	Aluminum
OP00320	20Gallon	10AN	Aluminum



Universal Oil Coolers

SKU	SIZE	FITTING	DESCRIPTION
OP00413	13Row	10AN Male Threads	Silver Color
OP00416	16Row	10AN Male Threads	Silver Color
OP00419	19Row	10AN Male Threads	Silver Color
OP00425	25Row	10AN Male Threads	Silver Color



Braided Fuel Line Hose Nylon Braided

SKU	NECK DIA	LENGTH	MAX W.PRESSURES
OP0056	6AN	10Feet Length	1,000PSI (70 Bar)
OP0058	8AN	10Feet Length	1,000PSI (70 Bar)
OP00510	10AN	10Feet Length	890PSI (60 Bar)
OP00512	12AN	10Feet Length	890PSI (60 Bar)
OP00516	16AN	10Feet Length	750PSI (50 Bar)

